



PRINTED SHADE CARD

Farbenkarte • Carte de Couleurs • Cartella Colori • Cartaz de Cores • Cartaz de Colores • Plakat Farve • Affisch Färg • Plakat Farge • Juliste Väri • Poster Kleur • Плакат цвет • Színes Poszter Plakát Barva • Plagát Farba • Цвят на плаката • Poster Renk • έγχρωμη αφίσα



1	<ul style="list-style-type: none"> ◆ Stranded Cotton - 8m ■ Soft Embroidery - 10m ● Pearl Cotton 3/5 - 5g ○ Pearl Cotton 5 - 50g ● Pearl Cotton 8 - 10g ○ Pearl Cotton 12 - 5g ○ Pearl Cotton 8 - 20g ▲ Coton à broder - 30m ★ Lace - 500m ☆ Lace - 900m 									
	3	5	8	12	16	25	20-30	40		
292	◆	■	●	●						
293	◆	■	●	●		▲				
295	◆	■	●	●						
305	◆	■	○	●	●	▲				
297	◆	■	●	●						
298	◆	■	●	●	●	▲				
288	◆	■	●	●						
289	◆	■								
290	◆	■	●	●	●	▲				
291	◆	■	●	●	●	▲				
275	◆									
386	◆	■	●	○	○					
300	◆	■	○	○	●	▲				
301	◆	■	●	●	●	▲	★	☆		
302	◆	■	●	●	●	▲				
303	◆	■	●	●	●	▲				
304	◆	■	●	●	●	▲				
313	◆	■	●							
314	◆	■			●					
316	◆	■	●	●	●	▲				
925	◆	■								
323	◆									
328	◆	■			●					
329	◆				●					
330	◆	■	●	●	●					
332	◆	■	●							
333	◆	■	●		●					
334	◆									
335	◆	■	●	●	●					

Eventuali differenze di tonalità sono da attribuirsi al processo di stampa. Per i colori reali fare riferimento alla cartella colori originale art. 0030030-02010.
 Eventuele lichte kleurafwijkingen zijn mogelijk omwille van het drukproces. Voor een exacte kleurweergave willen we u doorverwijzen naar kleurkaart 0030030-02010.

2	<ul style="list-style-type: none"> ◆ Stranded Cotton - 8m ■ Soft Embroidery - 10m ● Pearl Cotton 3/5 - 5g ○ Pearl Cotton 5 - 50g ● Pearl Cotton 8 - 10g ○ Pearl Cotton 12 - 5g ○ Pearl Cotton 8 - 20g ▲ Coton à broder - 30m 									
	3	5	8	12	16	25				
891	◆									
890	◆									
901	◆									
308	◆	■	●	●	●					
309	◆	■	●	●						
310	◆	■	●	●						
306	◆	■	●	●	●	▲				
307	◆	■	●	●	●	▲				
361	◆	■	●	●						
311	◆		○	○						
363	◆	■	○	○						
365	◆	■	●	●						
372	◆		●	●	●					
373	◆				●					
374	◆				●					
375	◆			●	●					
944	◆									
942	◆									
943	◆									
362	◆	■	○	○	●					
367	◆	■	●	●	●	▲				
368	◆	■	●	●	▲					
1045	◆									
1046	◆									
1002	◆									
1001	◆									
1003	◆		○	○	●					
324	◆	■	●							
326	◆	■	●							
1004	◆									
340	◆	■	●							

Mögliche Farbabweichungen sind drucktechnisch bedingt. Zur genauen Farbmusterung bitte Originalfarbkarte Art.Nr. 0030030-02010 benutzen.

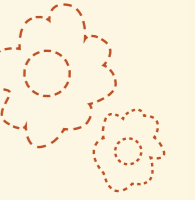


3	<ul style="list-style-type: none"> ◆ Stranded Cotton - 8m ■ Soft Embroidery - 10m ● Pearl Cotton 3/5 - 5g ○ Pearl Cotton 5 - 50g ● Pearl Cotton 8 - 10g ○ Pearl Cotton 12 - 5g ○ Pearl Cotton 8 - 20g ▲ Coton à broder - 30m 									
	3	5	8	12	16	25				
276	◆									
366	◆		○	○	●					
369	◆	■	○	○	●	▲				
370	◆	■	●	●	●	▲				
371	◆	■	●	●	●					
881	◆	■								
347	◆	■								
349	◆	■								
355	◆									
357	◆									
1047	◆									
1048	◆									
1049	◆									
351	◆	■								
352	◆	■								
1009	◆									
933	◆	■	○	○	●					
378	◆	■	●	●						
379	◆	■								
936	◆	■								
358	◆	■	●	●						
359	◆	■	●	●	●					
360	◆	■	●	●	●					
380	◆	■	●							
381	◆	■	●	●	●					
382	◆	■	●							
1080	◆									
1082	◆									
1084	◆									
1086	◆									
1088	◆									

Renklerde baskı tekniğinden kaynaklı sapmalar olabilir.
 Gerçek renkler için lütfen 0030030-02010 kodlu orijinal kartelayı baz alınız.

4	<ul style="list-style-type: none"> ◆ Stranded Cotton - 8m ■ Soft Embroidery - 10m ● Pearl Cotton 3/5 - 5g ○ Pearl Cotton 5 - 50g ● Pearl Cotton 8 - 10g ○ Pearl Cotton 12 - 5g ○ Pearl Cotton 8 - 20g 									
	3	5	8	12						
1011	◆									
1012	◆									
868	◆									
9575	◆									
1013	◆									
5975	◆									
1014	◆									
1010	◆									
336	◆	■	○	○						
337	◆	■	○	○	●					
338	◆	■	●							
339	◆	■	○	○	●					
341	◆	■	●	●						
778	◆	■	○	○	●					
882	◆	■								
883	◆	■								
884	◆									
880	◆	■								
4146	◆									
1008	◆									
914	◆									
1007	◆									
376	◆	■	○	○	●					
892	◆	■								
893	◆	■	○	○	●	●				
894	◆	■	○	○	●					
895	◆	■	○	○	●	●				
1027	◆									
896	◆	■	○	○	●	●				
1019	◆									
897	◆	■			●					

Färgerna kan avvika något från de som visas på grund av begränsningar i tryckprocessen / teknik.
 För exakta färger hänvisas till färgkartan, art.nr 0030030-02010.





5	<ul style="list-style-type: none"> ◆ Stranded Cotton - 8m ■ Soft Embroidery - 10m ● Pearl Cotton 3/5 - 5g ○ Pearl Cotton 5 - 50g ● Pearl Cotton 8 - 10g ○ Pearl Cotton 12 - 5g ○ Pearl Cotton 8 - 20g ▲ Coton à broder - 30m ★ Lace - 500m ☆ Lace - 900m 						
	3	5	8	12	16	25	20-30-40
1026	◆						
1021	◆						
1022	◆						
1023	◆						
1024	◆						
1025	◆		○	●			
1015	◆						
6	◆	■	●	●	●	▲	
8	◆	■	●	●	●		★ ☆
9	◆	■	●	●	●	▲	
10	◆	■	●	●	●		
11	◆	■	●	●	●		
13	◆	■	●				
31	◆						
33	◆						
35	◆						
1098	◆						
46	◆	■	●	○	○	●	▲
9046	◆			●		▲	
47	◆	■	●	○	○	●	▲
19	◆	■	●	●			
20	◆	■	●	●	●		
22	◆	■	●	●	●		
24	◆	■	●	●		▲	
25	◆		●	●		▲	
26	◆	■	●	●	●	▲	
27	◆	■	●				
28	◆	■	●	●	●		
29	◆	■	●				
1006	◆						
1005	◆						
45	◆	■					

Fargene kan avvike noe fra de som vises på grunn av begrensninger i trykkeprosessen / teknologi.
For nøyaktige farger se fargekart, art.nr 0030030-02010.

6	<ul style="list-style-type: none"> ◆ Stranded Cotton - 8m ■ Soft Embroidery - 10m ● Pearl Cotton 3/5 - 5g ○ Pearl Cotton 5 - 50g ● Pearl Cotton 8 - 10g ○ Pearl Cotton 12 - 5g ○ Pearl Cotton 8 - 20g ▲ Coton à broder - 30m ★ Lace - 500m ☆ Lace - 900m 						
	3	5	8	12	16	25	20-30-40
23	◆	■	●	●		▲	
36	◆						
38	◆						
42	◆	■	●	●			
40	◆	■	●				
41	◆						
39	◆						
59	◆			●			
43	◆	■	○	●			
44	◆	■	●	●	▲		
48	◆		●	●	▲	★	
49	◆		●	●			
50	◆	■	●	●	▲		
52	◆	■	●	●			
54	◆	■	●	●			
1094	◆						
55	◆			●			
57	◆			●			
60	◆						
62	◆			●			
63	◆			●			
65	◆						
271	◆						
73	◆	■	●				
74	◆	■	●				
75	◆	■	●	●			
76	◆	■	●				
77	◆		●				
78	◆						
1028	◆						

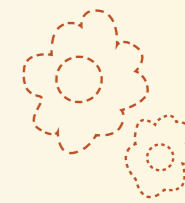
Farverne kan afvige en smule fra de viste på grund af begrænsninger i trykprocessen / teknologi.
For nøjagtige farver henvises til farvekort, art.nr 0030030-02010.
Kis mértékű színeltérés lehetséges a valódi színekhez viszonyítva, a nyomdatechnológiai korlátok miatt. A valós színeket az eredeti színkártya mutatja - cikkszám 0030030-02010.
При печат е възможно да се получи отклонение от реалните цветове.
За по-голяма точност на цветовете, вижте каталога с мостри от конци Анкор - арт. 0030030-02010.



7	<ul style="list-style-type: none"> ◆ Stranded Cotton - 8m ■ Soft Embroidery - 10m ● Pearl Cotton 3/5 - 5g ○ Pearl Cotton 5 - 50g ● Pearl Cotton 8 - 10g ○ Pearl Cotton 12 - 5g ○ Pearl Cotton 8 - 20g 			
	3	5	8	12
1020	◆			
1016	◆			
1017	◆			
1018	◆			
968	◆	○	○	
969	◆	○	●	
970	◆	●		
972	◆	●		
1029	◆			
66	◆			
68	◆		●	
69	◆	■	●	
70	◆		●	
72	◆	■	●	
103	◆			
85	◆	■		
86	◆	■		
87	◆		●	
88	◆	■		
89	◆		●	
95	◆		●	●
96	◆	■	●	●
92	◆			
94	◆			●
90	◆			
97	◆	■		
98	◆	■	●	●
99	◆			
100	◆	■	●	●
101	◆	■	●	●
102	◆		●	

Κατά την τύπωση μπορεί να υπάρξει απόκλιση από τα χρώματα. Για μεγαλύτερη ακρίβεια των χρωμάτων, δείτε τον κατάλογο με δείγματα από κλωστές Anchor - αρ. 0030030-02010.

8	<ul style="list-style-type: none"> ◆ Stranded Cotton - 8m ■ Soft Embroidery - 10m ● Pearl Cotton 3/5 - 5g ○ Pearl Cotton 5 - 50g ● Pearl Cotton 8 - 10g ○ Pearl Cotton 12 - 5g ○ Pearl Cotton 8 - 20g 			
	3	5	8	12
869	◆	■		
870	◆	■		
871	◆	■	●	
872	◆	■		
873	◆	■		
342	◆		●	●
108	◆	■	●	●
109	◆	■	●	●
1030	◆			
110	◆	■	●	●
111	◆	■	●	
112	◆	■	●	●
117	◆			
118	◆	■		
119	◆			
941	◆			
120	◆			
121	◆			
122	◆			
123	◆			
127	◆	■		
939	◆			
940	◆			
175	◆			
176	◆			
177	◆			
178	◆			
144	◆		●	
136	◆			
137	◆			
139	◆			





9	130	◆	■	●	○	●	●	●	▲	★	☆
131	◆	■	●	○	●	●	●	▲			
132	◆	■	●	○	●	●	●	▲			
133	◆	■	●	○	●	●	●				
134	◆	■	●	○	●	●	●				
140	◆										
142	◆										
143	◆										
128	◆	■	●	○	●	●	●	▲	★		
129	◆	■	●	○	●	●	●	▲			
145	◆		●	○	●						
146	◆		●	○	●						
147	◆	■	●	○	●						
148	◆	■	●	○	●						
149	◆	■	●	○	●						
150	◆	■	●	○	●	●	●				
152	◆	■	●	○	●	●	●			★	
1090	◆										
433	◆	■	●	○	●	●	●				
1089	◆										
410	◆	■	●	○	●	●	●				
1037	◆										
1096	◆										
343	◆										
920	◆										
921	◆										
922	◆										
1031	◆		●	○	●						
1032	◆										
1033	◆					●					
1034	◆		●	○	●						
1035	◆										
1036	◆										

10	975	◆	■	●	○	●	●	●	▲	★	☆
976	◆					●					
977	◆					●					
978	◆					●					
979	◆					●					
159	◆										
161	◆	■									
162	◆	■							●		
164	◆	■									
160	◆	■							●		
9159	◆	■									
1038	◆										
1039	◆										
158	◆										
928	◆										
167	◆	■	●	○	●	●	●				
168	◆	■	●	○	●	●	●				
169	◆	■	●	○	●	●	●				
170	◆	■									
1060	◆										
1062	◆										
1064	◆										
1066	◆										
1068	◆										
847	◆	■									
274	◆										
848	◆	■									
849	◆										
850	◆	■									
779	◆										
851	◆	■									



11	1092	◆	■	●	○	●	●	●	▲	★	☆
185	◆	■	●	○	●	●	●				
186	◆	■	●	○	●	●	●				
187	◆	■	●	○	●	●	●				
188	◆	■	●	○	●	●	●				
189	◆	■	●	○	●	●	●				
1070	◆										
1072	◆										
1074	◆										
1076	◆										
1042	◆										
875	◆		●	○	●	●	●				
876	◆		●	○	●	●	●				
877	◆		●	○	●	●	●				
878	◆		●	○	●	●	●				
879	◆		●	○	●	●	●				
213	◆	■	●	○	●	●	●				
214	◆	■	●	○	●	●	●				
215	◆	■	●	○	●	●	●				
216	◆	■	●	○	●	●	●				
217	◆	■	●	○	●	●	●				
218	◆	■	●	○	●	●	●				
683	◆	■	●	○	●	●	●				
858	◆		●	○	●	●	●				
859	◆		●	○	●	●	●				
860	◆		●	○	●	●	●				
861	◆		●	○	●	●	●				
862	◆		●	○	●	●	●				
259	◆		●	○	●	●	●				
260	◆	■	●	○	●	●	●				
261	◆	■	●	○	●	●	●				
262	◆	■	●	○	●	●	●				
263	◆	■	●	○	●	●	●				

12	206	◆	■	●	○	●	●	●	▲	★	☆
208	◆					●					
210	◆					●					
211	◆					●					
212	◆		●	○	●	●	●				
203	◆	■									
204	◆	■									
209	◆										
205	◆	■									
230	◆	■	●	○	●	●	●				
1043	◆										
240	◆	■	●	○	●	●	●		▲		
241	◆	■									
242	◆	■	●	○	●	●	●				
243	◆	■	●	○	●	●	●				
244	◆	■	●	○	●	●	●				
246	◆	■	●	○	●	●	●				
1044	◆										
225	◆		●	○	●	●	●				
226	◆	■	●	○	●	●	●				
227	◆	■	●	○	●	●	●				
228	◆	■	●	○	●	●	●				
923	◆	■	●	○	●	●	●				
229	◆	■	●	○	●	●	●				
238	◆	■	●	○	●	●	●				
239	◆	■	●	○	●	●	●				
245	◆	■	●	○	●	●	●				
264	◆	■	●	○	●	●	●				
266	◆	■	●	○	●	●	●				
265	◆	■	●	○	●	●	●		▲		
267	◆	■	●	○	●	●	●		▲		
268	◆	■	●	○	●	●	●		▲		
269	◆		●	○	●	●	●				



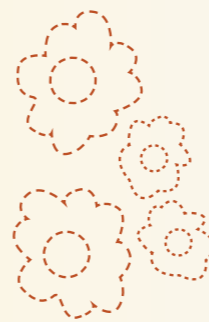
13	886	◆	■	Stranded Cotton - 8m			
				3	5	8	12
945	◆						
887	◆	■	○	○			
888	◆	■		●			
889	◆	■					
831	◆	■					
832	◆	■					
898	◆	■					
874	◆						
907	◆	■					
277	◆						
906	◆						
253	◆	■					
254	◆		●	●	●		
255	◆	■	●	●	●		
256	◆	■	●	●	●		
257	◆	■	●	●	●		
258	◆	■	●	●	●		
278	◆	■					
279	◆	■				●	
280	◆	■				●	
281	◆	■			●	●	
924	◆	■					
842	◆	■					
843	◆	■					
844	◆	■					
845	◆	■					
846	◆	■					
681	◆	■					
852	◆						
853	◆						
854	◆						
855	◆						
856	◆						

14	1	◆	■	○	●	▲	▲	▲	★☆☆	☆☆★
926	◆		●	○	○	●	▲	▲	★☆☆	☆☆★
387	◆	■	○	○	●	▲	▲	▲		
388	◆	■	●	●	●	▲	▲			
390	◆	■	○	○		▲			★☆☆	☆☆★
391	◆	■	○	○		▲				
392	◆	■	○	○	●	▲	▲			
393	◆	■	●	●						
885	◆	■								
956	◆									
830	◆	■								
899	◆									
903	◆									
904	◆	■								
905	◆	■								
1050	◆									
900	◆	■								
1040	◆									
8581	◆	■								
273	◆									
1041	◆									
231	◆									
232	◆									
233	◆									
234	◆	■	○	○	●					
235	◆	■	●							
236	◆	■	●	●						
397	◆	■	●	●					★☆☆	
398	◆	■	●	●	●	▲				
399	◆	■	○	○	●					
400	◆	■	●	●	●					
401	◆	■								
403	◆	■	●	●	●	▲	▲		★	

15			
820	■		
803	■		
676	■		
677	■		
678	■		
679	■		
282	■		
806	■		
816	■		
837	■		
838	■		
840	■		
675	■		
219	■		
221	■		
224	■	●	
817	■		
802	■		
590	■		
815	■		

16		5	8
1217	◆	●	●
1220	◆	●	●
1218	◆	●	●
1202	◆		●
1201	◆		●
1204	◆		●
1203	◆		●
1207	◆		●
1206	◆	●	●
1209	◆		
1212	◆		
1211	◆		●
1210	◆	●	●
1213	◆		●
1215	◆	●	●
1216	◆	●	●

17		5	8
1302	◇	*○*	*●
1304	◇	*○*	*●
1305	◇	*○*	*●
1315	◇	*○*	*●
1320	◇	*○*	*●
1325	◇	*○*	*●
1335	◇	*○*	*●
1344	◇	*○*	*●
1345	◇	*○*	*●
1349	◇	*○*	*●
1355	◇	*○*	*●
1375	◇	*○*	*●



19		5
0001	●	
0046	●	
0683	●	
0150	●	
7001	●	
7046	●	
7683	●	
7150	●	

18		5
1300	◇	*●
1301	◇	*●
1303	◇	*●
1316	◇	*●
1318	◇	*●
1342	◇	*●
1347	◇	*●
1352	◇	*●
1353	◇	*●
1360	◇	*●
1385	◇	*●
1390	◇	*●

20		Lamé Art. 4180
300		
301		
303		
318		
320		
322		
		Metallic Art. 4316
300		
301		
318		
320		
322		
304		
324		
342		
		Astellra Art. 0375
300		
301		



Austria	Coats Harlander Ges.m.b.H., 1210 Wien Tel. (01) 2 77 16-0 • Fax (01) 2 77 16-228 • www.coatscrafts.at • coats.harlander@coats.com
Benelux	Coats NV, Graanmarkt 42 A/1 - 9400 Ninove - België/Belgique België: Telef 054 318989 • Fax 054 318999 Nederland: Telef 00 32 54 318989 • Fax 00 32 54 318999 België/Belgique + Nederland: sales.coatsninove@coats.com • www.coatscrafts.be
Bulgaria/Greece/Cyprus Serbia/Montenegro/Macedonia Bosnia & Herzegovina/Albania	Coats Bulgaria EOOD, 7 Magnaurska shkola Str., 1784 Sofia, Bulgaria Phone: +359 2 976 77 41-45 • Fax: +359 2 976 77 20 • officebg@coats.com BG: www.coatsbulgaria.bg • GR: www.coatscrafts.gr • CY: www.coatscrafts.com.cy
Czech & Slovakia	SK: Coats s.r.o., Kopčianska 94, 851 01 Bratislava, Slovakia Tel. 00421 2 63532314 • Fax 00421 2 63537714 • www.coatscrafts.sk CZ: Coats Czecho s.r.o., Staré Město 246, PŠČ 569 32, Czech Republic Tel. 00420 461 616633 • Fax 00420 461 542544 • www.coatscrafts.cz
Denmark	Coats HP A/S, Tagensvej 85C, st, tv DK-2200, København N. Tel. + 45 35 83 50 20 • Fax + 45 35 82 15 10 • kundeservice.dk@coats.com • www.coatscrafts.dk
Estonia	Coats Eesti AS, Ampri tee 9/4, Pk Haabneeme, EE-74001 Viimsi Vald Harjumaa Tel. +372 6 306 250 • Fax +372 6 306260 • kundeservice.dk@coats.com • www.coatscrafts.dk
Finland	Coats Opti Crafts Oy, 04220 Kerava Tel. +358 (0) 9 274 871 • Fax +358 (0) 9 242 6186 • www.coatscrafts.fi
France	Coats Steiner S.A.S., 18500 Mehun-Sur-Yèvre Tel. 33 (0) 2 48 23 12 30 • Fax 33 (0) 2 48 23 12 40 • www.coatscrafts.fr
Germany	Coats GmbH, 79341 Kenzingen Tel. (07644) 802-222 • Fax (07644) 802-300 • Kenzingen.Vertrieb@Coats.com
Hungary	Coats Crafts Hungary Ltd., H-7500 Nagyatád, Gyár u. 21. Tel. (36) 82 504 300 • Fax (36) 82 504 394 • www.coatscrafts.hu
Italy	Coats Cucirini S.r.l., Viale Sarca, 223, 20126 MILANO Tel. (02) 636151 • Fax (02) 654196 • www.coatscucirini.com
Latvia	Coats Latvija SIA, Mukusalas iela 41b, LV-1004 Riga Tel. : +371 7 625031 • Fax : +371 7 892 758
Lithuania & Russia	Coats Lietuva UAB, Juozapaviciaus 6/2 str., Vilnius 09310 Tel: +370 5 272 38 03 • Fax: +370 5 272 30 57 • info@coats.lt
Norway	Coats Knappehuset AS, Hesthaugveien 16, 5119 Ulset Tel. (47) 55 53 93 00 • Fax (47) 55 53 93 93
Poland	Coats Polska Sp. z o.o., ul. Kaczeńcowa 16, 91-214 Łódź Tel. +48 42 25 40 400 • Fax +48 42 25 40 421 • www.coatscrafts.pl
Portugal	Coats & Clark S.A., Quinta de Cravel, Apartado 444, 4431-968 V.N. Gaia Tel. 223 770 700 • Fax 223 770 157 • www.coatscrafts.com.pt
Romania	Coats Romania Impex Srl, Str. Slt. Alexandru Borneanu, nr. 2, et. 2, RO-060758, sector 6, București, România Tel. +40 (0)21 317 55 03/00 • Fax+40 (0)21 317 55 06 • www.coatscrafts.ro
Spain	Coats Fabra S.A., Sant Adrià 20, 08030 Barcelona Tel. 93 290 85 00 • Fax 93 290 85 08 • atencion.clientes@coats.com • www.coatscrafts.es
Sweden	Coats Expotex AB, Division Craft, Box 25, 516 21 Dalsjöfors Tel. 033 720 79 10 • Fax 033 720 79 40
Switzerland	Coats Stroppel AG, 5300 Turgi Tel. 056 298 12 20 • Fax 056 298 12 50 • coats.stroppel@coats.com • www.coatscrafts.ch
Turkey	Coats Crafts Tekstil Sanayii ve Ticaret A.Ş., Kavacık Mah. Ekinciler Cad., Necip Fazıl Sok. No: 8 Kat: 5, 34810 Beykoz - İstanbul Tel. +90 216-425 88 10 • Fax +90 216 425 88 09 • www.coatsturkiye.com.tr
U.K.	Coats Crafts UK, Green Lane Mill, Holmfirth, West Yorkshire, HD9 2DX, England, Tel. 44 (0)1484 681881 • Fax 44 (0)1484 687920 enquiries.ccuk@coats.com • trade.ccuk@coats.com • www.coatscrafts.co.uk
Ukraine	Coats Ukraina TOV, 18/14 V. Khvoiky Str. office 307, 04080 Kiev Tel. +38 044 586 4968 • Fax +38 044 586 4972

